

Homewood Early Learning Center Parent Meeting

Fall 2023

Introductions



Meredith Stewart
Interim Vice President, Human
Resources and Executive Director,
Total Rewards



Bob McLean
Vice President, Facilities



April Floyd
Sr. Director, Benefits and Worklife

History of the Center and Childcare Programs

- JHU is proud of the history of our Childcare Programs
- Each year, we enroll over 300 children into our centers
 - In 2001 we opened the **Johns Hopkins Childcare and Early Learning Center** located on the East Baltimore Campus in School of Medicine
 - In 2014 opened the **Weinberg Early Childhood Center** located near the East Baltimore Campus
 - In 2015 partnered with DBCC to open the **Homewood Early Learning Center**
- In 2020 JHU expanded our programs further to make childcare affordable for our lowest resourced employees and students through the Childcare Scholarship and Voucher Programs. As of FY23 974 families have received \$8.7M in support of childcare costs.



A New Home for the Early Learning Center (ELC)

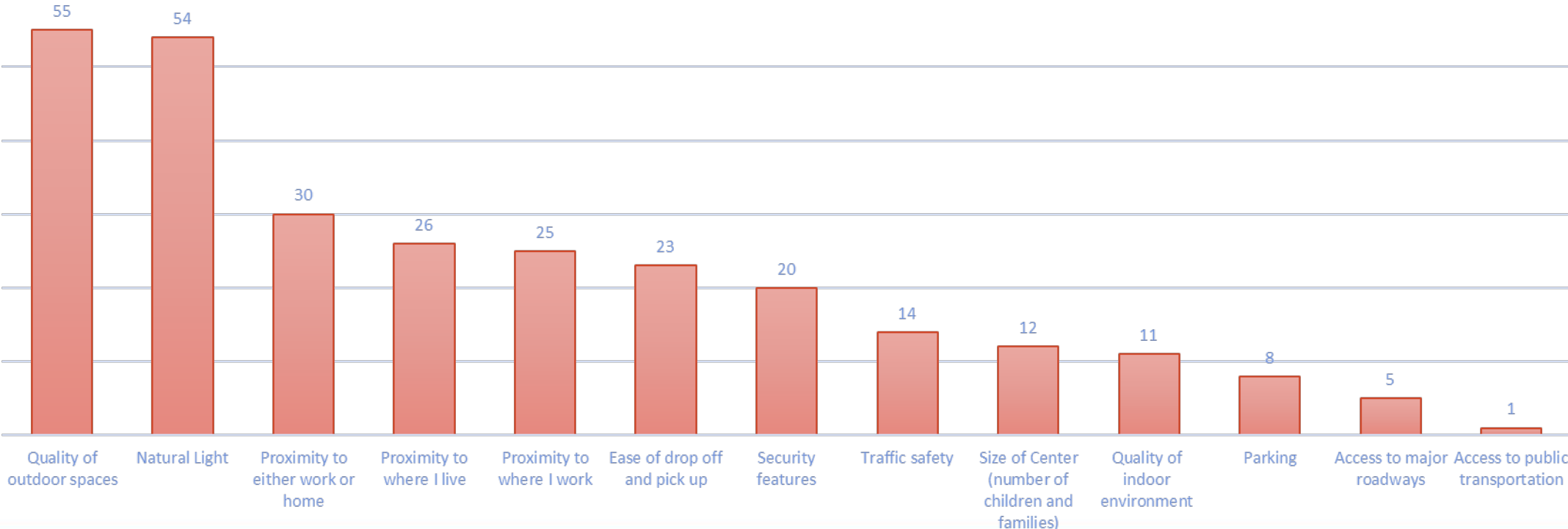
- The current building isn't meeting our needs; thank you for your patience as we worked through some recent facility issues at Homewood Early Learning Center (ELC)
- Our current, semi-permanent site on the Homewood campus will make way for a new Data Science and Translation Institute, creating an opportunity to move the ELC to a permanent home
- We will be working closely with Downtown Baltimore Child Care (DBCC) and you throughout this transition
- New Center Priorities:
 - Create the next generation of early learning center with a permanent home
 - Prioritize continuity of service to ensure families have care stability
 - Focus on locations that meet program requirements (including regulatory, safety) and are convenient for faculty and staff across the university
 - Engage parents and families in the relocation planning through parent meetings, a survey and resource group
 - Continued support for care affordability
 - Evaluate opportunities to expand childcare capacity

Parent Survey

Thank you for your responses – 59 individuals responded

Of those who responded:

- 65% work on the Homewood Campus
- 74% identified that 2 or more miles is "too far from work"
- Top priorities: quality outdoor space, natural light, proximity and safety

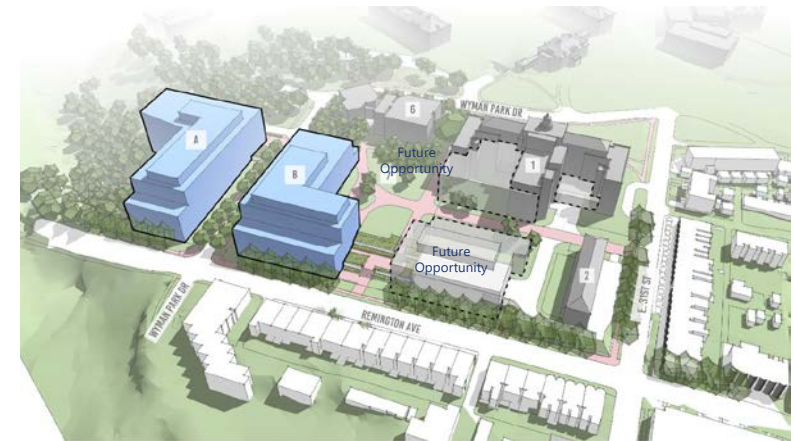


Project Overview: Data Science and Translation Institute

- The Wyman Park Precinct, which includes the Early Learning Center, is the ideal site for the new Data Science Translational Institute
 - Proximity to Whiting School of Engineering facilities
 - One of the few remaining undeveloped sites on the Homewood Campus
 - Adequate to handle new academic and research facilities as well as parking required for new faculty and staff
- Faculty growth is a schedule driver for DSTI, to be delivered by December 2028
- The new project creates an opportunity for a permanent home for the ELC with expanded capacity



Building By Right (within current zoning requirements)



Building With Zoning Variance (JHU currently pursuing) and future development opportunity for WPP

Timeline

Our key priority is to make sure there is no gap in care for children and families. To ensure continuity of childcare, the delivery timeline will need to be as follows:

- Fall of 2023 - Begin planning and design
- Fall of 2024 - Secure permits, begin construction
- Early 2026 - Complete construction and be ready to serve JHU families

Relocation of the ELC will allow removal of the existing temporary ELC structure required to begin construction of the first DSTI building in early 2026



27 months to move in

Locations Proximate to Homewood Campus

Options are limited and would limit space to **only temporary structures with potential to move the center again** in the future. Additionally, developing the below sites would **interrupt childcare services**.



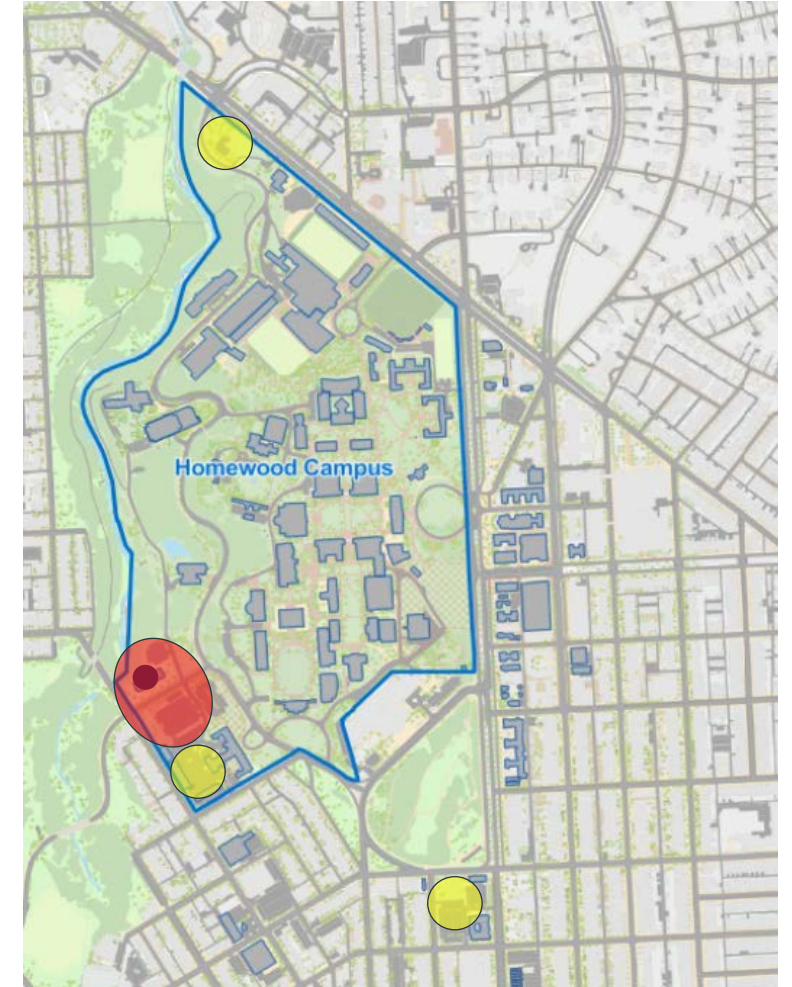
Wyman Park Parcel Site (WPP)



University Parkway Site



29th Street Site



Other Possible Locations



Keswick

Considerations:

- Inadequate outdoor playground space for children
- Center would be on an interior space without natural light



Mt. Washington

Considerations:

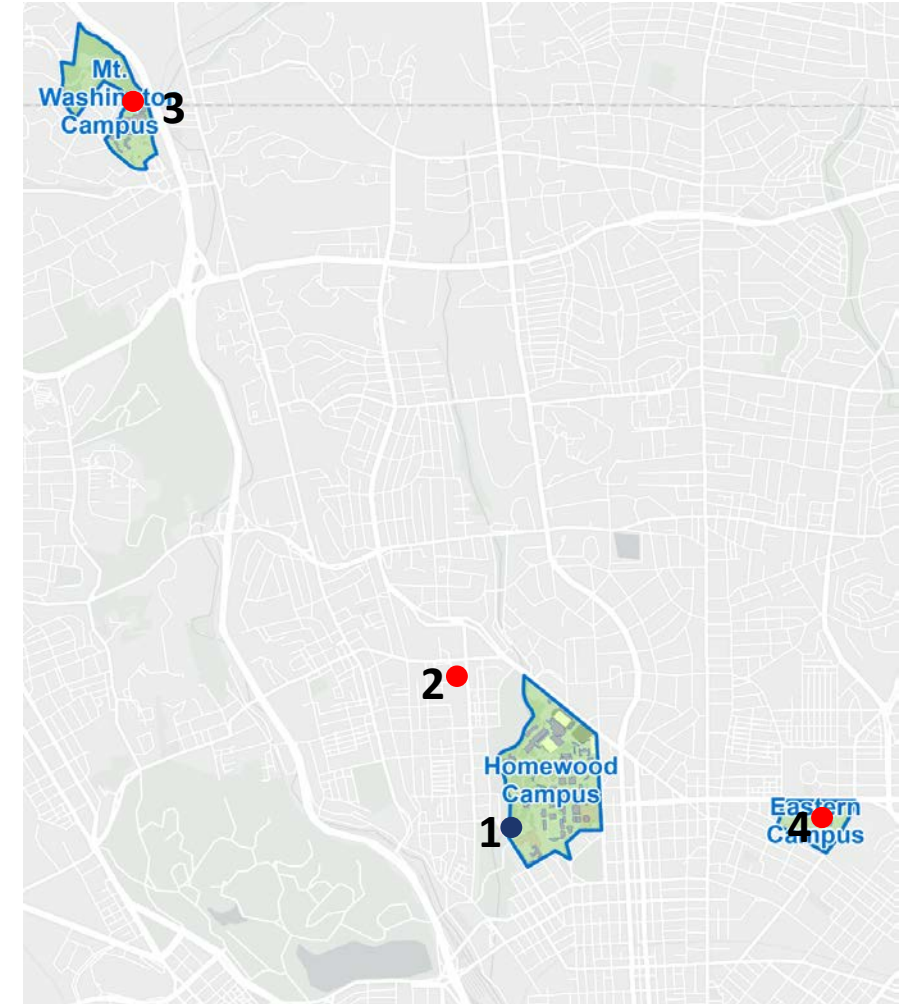
- Provides adequate space (indoor and outdoor) and many other priorities
- 4+ miles from campus presents proximity concerns



JHU at Eastern

Considerations:

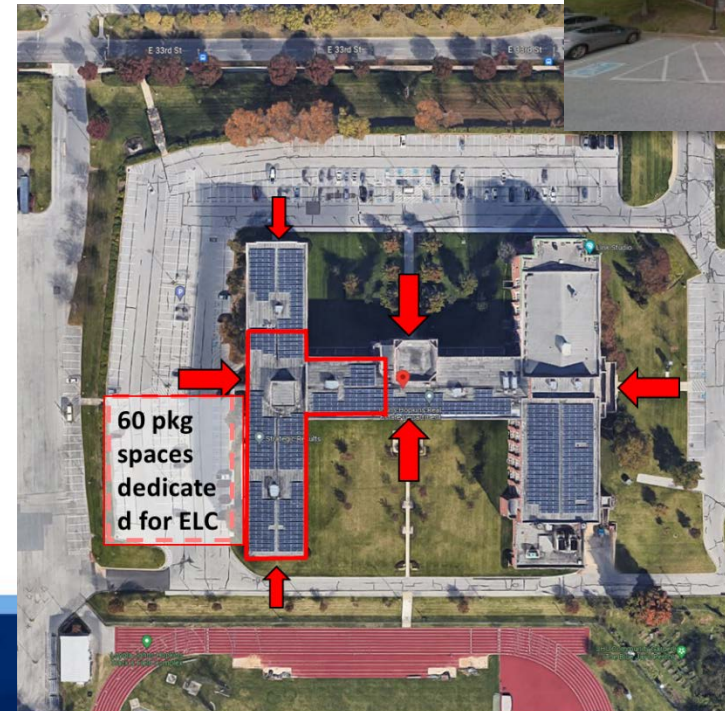
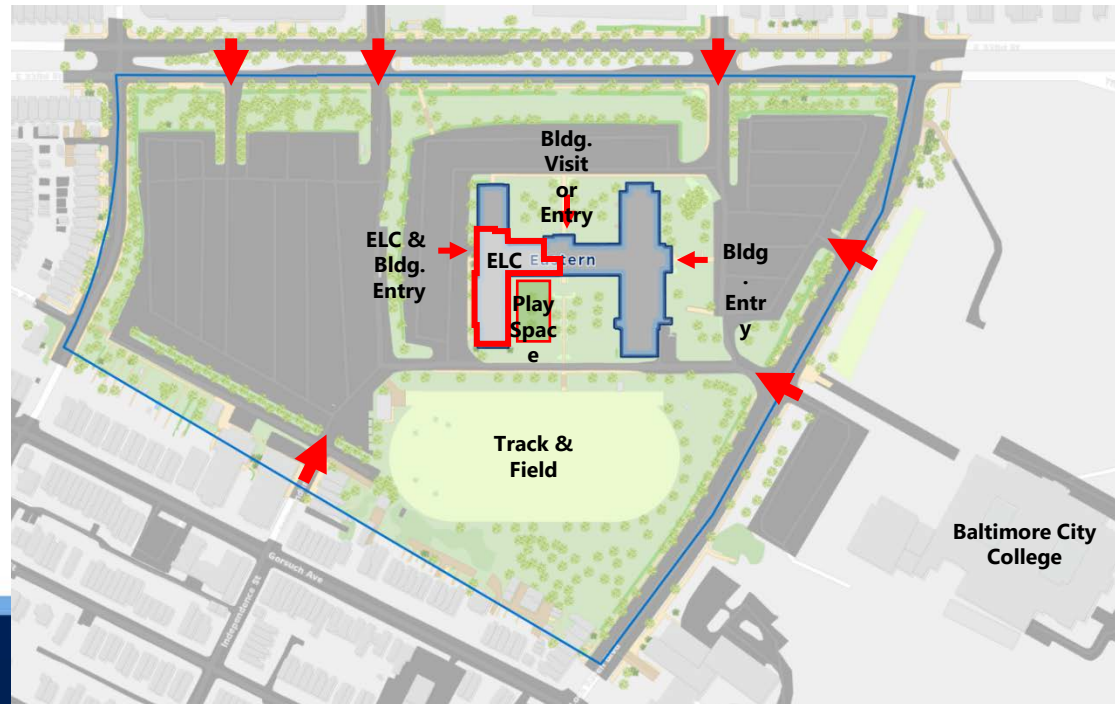
- Provides adequate space (indoor and outdoor) and many other priorities
- 1 mile from Homewood Campus meets proximity expectations
- Provides opportunity to expand capacity



Early Front Runner: JHU at Eastern Building

Locating the ELC at Eastern offers the following advantages and supports many of the priorities we heard from you:

- Large parking facility that may be reorganized to accommodate parent drop off
- Accessible entrance dedicated to the ELC only
- Building layout allows a secure childcare facility that may be separated from other building populations
- Ability to offer a large outdoor play area
- Open, contiguous space for indoor activities
- High ceilings throughout all spaces
- Large windows that allow generous natural daylight throughout all interior spaces
- Vacant and zoned space allows for continuity of care



Location in the southwest wing @ Ground Floor

Childcare Resource Group

Goal: To support and inform the design of the future home of the ELC

- Beginning in early November
- We will gather a cross section of parents of current and prospective enrollees as well as DBCC administration, consultants and teachers
- Areas of focus include:
 - Construction Design
 - Aesthetic Design
 - Playground Design, etc.

Next Steps

- Gather feedback following meeting via email: Childcare@jhu.edu
- Coordinate Parent Resource Group Meeting
- Finalize decision on location in October